

# New Homes

RICH TONES CREATE WARMTH  
IN SUMMIT SOUTH WEST'S  
SUNDOWNER DISPLAY

RUSTIC MEETS INDUSTRIAL  
ELEMENTS IN THE MARLEY  
BY DALE ALCOCK HOMES



## *Against* **THE GRAIN**

RESIDENTIAL ATTITUDES MELTS FARM FUNCTIONALITY  
WITH MODERN FLAIR IN THE BARNHAUS



@thewestnewhomes



# Funky approach to retro

✦ BY MICHAEL ROBERTS

**Forging out in a new direction and doing away with convention, Residential Attitudes' Barnhaus display stands out amongst the crowd.**

Channelling the functionality of a traditional barn structure while adding a classy touch of modern flair, the Barnhaus was designed to serve a purpose, forge connections and provide a whole lot more than just shelter.

This three-bedroom, two-bathroom display is open and spacious, though it focuses on style and substance over size.

The facade is a head-turner, with a striking design that draws inspiration from the home's rural namesake.

With a mix of steel, glass, concrete and natural timber throughout, the design utilises modernist architecture, according to Residential Attitudes Principal Designer Brook Leber.

"The home is fun and lively, with a funky approach to the original retro era," he said. "We've played with shapes, texture, colour and pattern to create a fun and vibrant interior, capturing the Residential Attitudes brand."

**Channelling the functionality of this traditional barn structure while adding a classy touch of modern flair, the Barnhaus was designed to serve a purpose.**

"The interior is complex and layered, with geometric and abstract shapes and pops of colour offset by natural timber."

Across two levels, the home is set up to provide an excellent transition between the interior and exterior spaces.

On the ground floor an open-plan kitchen, living and dining area is a sumptuous

*Continued on page 4...*



...Continued from page 3.

space that stretches from the front verandah to the alfresco at the back, while on the upper floor a boudoir takes pride of place and enjoys picturesque views over a stunning pool and backyard.

Just off a quaint living space titled 'the rumpus room', the aviary is one of the more distinct features of an already unique home.

Innovative design at its best, this feature is an unconventional take on an outdoor

balcony, with mesh flooring that floats over the courtyard below and looks to the parkland beyond.

Residential Attitudes has carefully thought out the philosophy behind this design, leaving the "usual display inhibitions behind", according to Mr Leber.

"I believe we have forgotten homes, like a barn, are meant to serve a purpose," he said.

"Families are meant to connect, eat, live, laugh and love – a home isn't just meant to be a shelter.

"The Barnhaus was named not only for its industrial barn aesthetic, but to remind us building a home is meant to be fun and focused on how you live, not how building companies think you live.

"The facade is architecturally striking, but internally the home is designed for modern WA living and is 100 per cent functional whilst being whimsical, open and airy.

"We wanted to take a common-sense approach. Every square metre is used every day without a single bit of wasted space."

Creative, fresh and unconventional – the Barnhaus is the perfect offering for those who like to go against the grain.

The display is located in Karrinyup and is open for viewing Saturdays and Sundays from 2-4pm.



## BARNHAUS

3 2

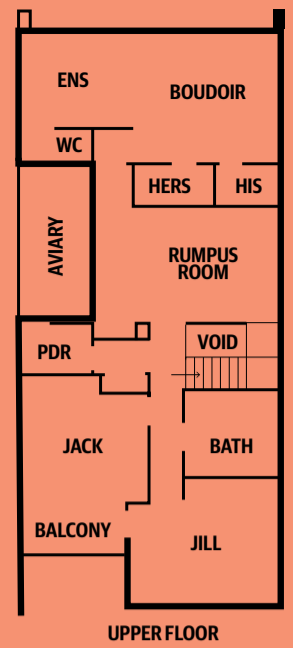
ADDRESS From \$573,317

PRICE 2A Wheeler Road, Karrinyup

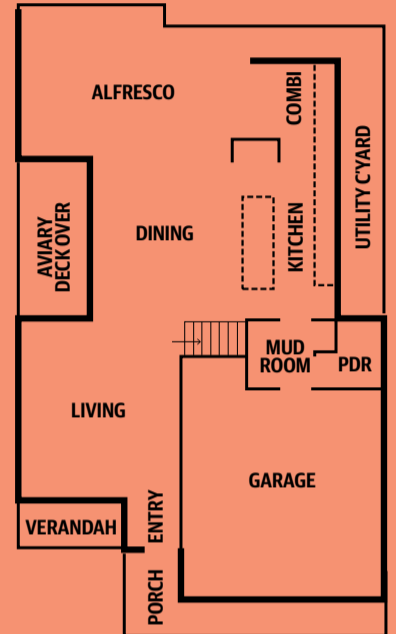
BUILDER Residential Attitudes

CONTACT 1800 958 039

[www.residentialattitudes.com.au](http://www.residentialattitudes.com.au)



UPPER FLOOR



GROUND FLOOR